
SPAUG *Print Screen*

Vol. XV No. 04 - Newsletter of the Stanford / Palo Alto Users Group for PC
A Non-Profit / Educational Organization - <http://www.mediacity.com/~spaug>

Bob Mitchell - Words from the Prez

Things are starting to look up. We will be back at EPRI this month with a guest we had to book about 5 months ago in order to get him. Fortunately EPRI was able to provide us with their facilities on our regular meeting night, the last Wednesday of the month. Richard Katz of Intuit is a very popular guest. He covers User Groups all over the United States. I think we are going to learn a lot about a number of programs from Intuit, which as you know is the house that built Quicken. It looks like we can also plan on Roche Center as a backup to EPRI, albeit for a price. Our club computer now has sufficient memory to handle and be loaded with Win 95. We can depend on it to handle just about any program application. Because of this we will be booking a number of months into the future. This should provide us with an opportunity to get some top guests and get a maximum amount of publicity, which in turn may bring in some new members and hopefully bring back a number of ongoing members who haven't attended lately. It should also encourage all of our members to bring guests and expose them to what we can offer them. All by way of telling everybody that we are alive and kicking and speaking for all of the officers and very active members, we will be anxious to see a number of old faces and new faces at the meeting on April 30.

General Meeting Minutes

March 26, 1997

Members and guests were welcomed to the meeting which was held at Cubberly Center. There were 21 members and 5 guests.

The Power Quest Corporation, the makers of Partition Magic supplied us with a complete presentation kit which offered a very complete

demonstration covering hard disk partitioning basics. It explained the many values to establishing partitions, particularly on today's multi-megabyte hard drives. They also supplied a copy of Partition Magic which was used to actually go through the steps in establishing partitions in a hard drive. (For those who may have missed that demonstration, the highlights are printed in this issue of Print Screen along with some information about file allocation tables, more popularly known as FAT. Robert Mitchell demonstrated some of the programs contained in the disk of the month (DOM).

April DOM

fixes Win95

**General Meeting
April 30th - 7:30PM @ EPRI
Guest Presentation by Intuit**

**SPAUG Computer
Gains
Memory !!!**

*Bob Mitchell - So you think you know
all about partitioning a hard disk -
Well let's see!*

For openers you say, "Who cares?" You can pick up gigabyte hard drives now for a song and there is no reason to bother with partitioning any more. Really? Well let's look at it a bit closer.

You've now invested in Win 95 and have quite possibly discovered that some of your Windows 3.X application don't work as well as they used to, or maybe don't work at all. There may also be a few DOS programs that you still like to use with which you are now having problems. It would be so nice to on occasion elect to boot up Win 3.x rather than Win 95. There are of course dual boot programs that will do this even though the two Windows programs are on the same partition, but you'll find it a lot cleaner if you can devote one partition to Win 3.X and have a separate partition for WIN 95 and its programs. Setting up your hard drive with two (or more) primary partitions will do this. That's the first reason.

Did you know that your 1.2 gigabyte drive is probably only about 60% efficient. That means that with one partition you only are using about 720 megabytes. The rest are wasted. Why is that? Let's talk about "clusters" for a moment. A cluster is the smallest allocation of disk space that your system uses to store your files. Files are placed in one or more clusters depending on the size of the file. Very large files would be stored in multiple clusters with the last cluster only being partially filled. A small file would be stored in one entire cluster. The key thing here is that files cannot share clusters.

Not a problem you say. A larger hard drive has more clusters. Wrong! Unless of course it has more than one partition. There are 65,000 clusters in a 100 MB partition. There are 65,000 in a 1 Gigabyte drive, in a 2 gigabyte drive, in a 3 gigabyte drive. So what happens when you increase the size of the drive. You increase the size of the cluster. For example the clusters in a partition just

under 512 MB are 8K. The clusters in a 1GB partition are 32 KB. This might not be a problem were it not for the fact that most of your files are small. For example each shortcut file in Win 95 creates a 2K file. You're using a "hall" that will accommodate 32 people for two people. The answer of course is to create a second partition by splitting your 1 GB drive in half. Each partition will have clusters 8K in size. Make sense? That's the second reason.

Now about FAT or "File Allocation Table" In order for your computer to access the files that you or your applications request, it must have some source of information to tell it where those files are. Every partition has a FAT to perform that function. It keeps track of the location for every part of every file. It also maintains an inventory of all clusters that are available to act as a home for newly saved files. By the way, you know that when you "delete" a file you don't actually erase it. You only tell the FAT that you don't want that file and you are allowing FAT to open up those clusters used for the "deleted" file for the next files to be saved. That is why programs such as Norton Utilities can usually resurrect those "deleted" files and why it is important to use it before you save new files. But then you knew that didn't you.

Incidentally the newer file systems that have come out such as OS/2's HPFS and Windows NT's NTFS and Microsoft's FAT32 are designed so that clusters are not a problem. But of course if you are still using the original FAT file system, and most of us are, we must do the best with what we have.

There is a third reason to establish additional partitions. There is this phenomena known as fragmentation. That comes about as you constantly delete some files and add others. Ideally you would want to save files in adjacent clusters. This makes it much easier and faster for your computer to locate all of the clusters that make up a file and copy them to your random access memory so that you can work with them. Try as it may, your old friend FAT cannot always do this. It must find open cluster space wherever it can. As a result the file that you need may have bits and pieces in separated clusters all over your

hard disk. Not good. So what do you do. So far you have two primary partitions, one for Win 3.x and one for Win 95. You might wish to create a third primary partition as an "extended" partition and on it create "logical" partitions. You would then place program applications on one logical partition and data files on the other logical partition. Why do this? You do it to separate your somewhat "stable" files such as your program applications from your "active" data files that are constantly being changed. That way most of your fragmentation will be confined to one partition. You need only defrag one relatively small partition which will take no time at all. This will also help when you back up your files. Since all of the data files that you would normally back up are on one partition it will be much easier and faster for you to do your daily backup. You do backup your files on a daily basis don't you? Well, do you? That's a lot of information crammed in a very limited amount of space. While many of you may feel that this is all a part of Computers 101 that you learned a long time ago, there is that possibility that something in all this was helpful to you. I hope so.

Robert Mitchell - DOM 9704

95 Utilities

WINDOWS 95

More20.exe - 140kb - This utility groups all of the different utilities such as editing registry settings, rebuilding icons if they get messed up, etc. It brings these and more under one convenient interface. A tool that all Windows 95 user must have. This program requires the Visual Basic Runtime Module and Windows 95 updated systems files. They can be downloaded from <http://home.global.co.za/~olivierd/imaginary/>.

Regcln41.exe - 404kb - This programs goes through the different settings in the Windows 95 Register and checks them over for errors and fixes them. If there are any settings of programs that aren't there, it will remove them. For any changes that are made to the registry, there is an undo file generated to

provide a backup of the original settings.

Startcln.exe - 34kb - This program will clean empty shortcuts out of the start menu. It goes through the different shortcut files and sees if they are connected to any programs. If they are not connected to any program or other files, non-existent network connections or drives and eliminates them. It makes a cleaner uncluttered start menu.

DOS

SCN300e.exe - 645kb - The latest version of the McAfee Anti Virus Program.

Readme.1st - 1kb - The file that contains the information about the files on this disk.

*Thank You for the following
Membership Renewals*

**Mildred Kohn
Stan Hutchings
Ronald Seltzer
Ira Gold
Frank Campbell**

**John MacMurray
Aldora Lee
Don Campbell
Denise Delange**

Kendric Smith - RoRap Newsletter

The "RORAP NEWSLETTER" is a free SUBSCRIPTION ONLY service. It's easy!! Just send an email to: subscribe@rorap.com. The publication will be delivered to its members on a weekly or BI-weekly basis. It will contain tips on using Windows '95, hints on using on-line services and the Internet in general, and some websites will be listed if we find them to be of an entertaining, informative, or educational nature.

The RORAP NEWSLETTER started out as a school project. It is put together by 2 computer geniuses and 1 marketing wizard, all three working on their masters at a world-renowned institution of higher learning. Once the project was complete we started to disband the group but public outcry was so intense we were forced to continue. The purpose of this publication is to INFORM, EDUCATE, and ENTERTAIN you, as well as us.

Questions and Answers

The SPAUG Web Page
 available at
<http://www.mediacity.com/~spaug>
 sponsored by
MediaCity
 500 Logue Ave
 Mtn View, CA 94043
 (415) 321-6800
 PPP/T1/Frame Relay/ISDN

Computer Radio

Leo Laporte
 on Computers
 Saturday
 10am - 1pm
 KSFO 560 AM

Gina Smith
 Sunday 10am - 1pm
 KPIX 95.7 FM

Gina Smith
 Sunday 10am - 1pm
 KPIX 1550 AM

Contacts

Bob Mitchell
tvbob1@aol.com
 President (415) 368-9530
Arlan Kertz
akertz@seiler.com
 Vice President (415) 368-9346
Walter Varner
walt2222@aol.com
 Accountant (408) 739-3488
Mildred Kohn
mildredk@aol.com
 Secretary (415) 949-1833
Beverly Altman
bevaltman@aol.com
 Membership (\$35 annual dues)
 Director at Large (415) 329-8252
Kendric Smith
kendric@aol.com
 WebMaster (415) 493-7210
Brian Christopher
brianc@mediacity.com
 Newsletter (415) 952-5632

Listserver

spaug-list@mediacity.com

Any member on the spaug-list can send messages to all other members on the list automatically by sending e-mail to this address. This list is intended for announcements of interest to all SPAUG members. Please avoid excessive or trivial announcements, since they tend to annoy some members, especially those paying for connect time.

Additions or corrections can be sent to:

spaug@mediacity.com

General Meeting
April 30th, 7:30PM
 at
EPRI
3412 Hillview Ave.
Palo Alto

Name	Area Of Expertise	Phone	Hours	E-Mail
Jim Bailey	DOS , Quick Books	415 494 -631	9AM - 9PM	NA
Bill Goldmacker	DOS	415 691 0911	6PM - 9PM	gold@svpal.org
Clyde Lerner	Netscape, Word/Win, Lotus Notes, Ascend/Win, Franklin Planner	415 494 2593	6PM - 9PM	clerner@ub.c0m
Bill McElhinney	Quicken, Dazzle, Plug In, Word Express, Daytimer, Sidekick	415 325 9808	9AM - 9PM	Mcels@aol.com
John Sleeman	Fortran	415 326 5603	9AM - 8PM	sleeman-j@shs-stanford
Walt Varner	All PC areas: Software and Hardware incl. Win 95	408 739 3488	9AM - 9PM	walt2222@aol.com

Computer Television

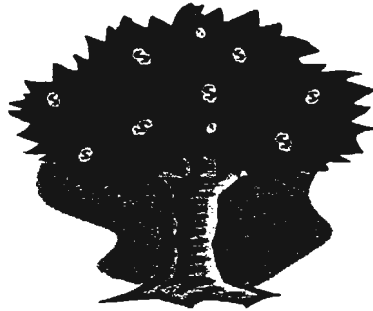
New Media News	Monday through Saturday	6:30 PM & 10:30 PM	Bay-TV
Internet	Sundays	10:30 AM	MEU
Users	Sundays & Wednesdays	6:30 PM	MEU
C/Net Central	Saturday	6:30 PM	Channel 5
Computers	Sun, Mon, Wed, Sat	8:00 PM	MEU
Computer Man	Sunday	12:30 AM	Channel 4
Computer Chronicles	Mondays	6:00 PM	KCSM CH 60
Computer Connection	Saturdays	12:00 N and 1:00 AM	CNN
Log on TV	Saturdays	7:30 - 8:00 PM	Channel 7 - KGO TV
Managing Comm.App.	Thursdays	12:00 N to 2:00 PM	MEU
Silicon Valley Business	Sundays	10:00 PM	KICU CH 36
The Site	Monday thru Friday	7:00 & 11:00 PM	MSNBC
The Site	Monday thru Friday	2:00 & 5:00 AM	MSNBC
TV Com	Sunday	6:00 - 6:30 PM	Channel 7 - KGO TV

**Membership Application in the Stanford / Palo Alto Users Group for PC
\$35 annual dues payable to SPAUG**

Name: _____ Address: _____
City: _____ State: _____ Zip: _____
Home: _____ Work: _____ Fax: _____
E-Mail: _____
New Member: _____ Renewal: _____
Special Interest Group: _____

The above information is for SPAUG use only.

Mail to: The Stanford / Palo Alto Users Group, PO Box 3738, Stanford, CA 94309-3738
Questions? Call Beverly Altman (415) 329-8252 or Bob Mitchell (415) 368-9530



**NEXT AT SPAUG
APRIL 30 AT EPRI**

INTUIT PRESENTS

Personal Finance Software

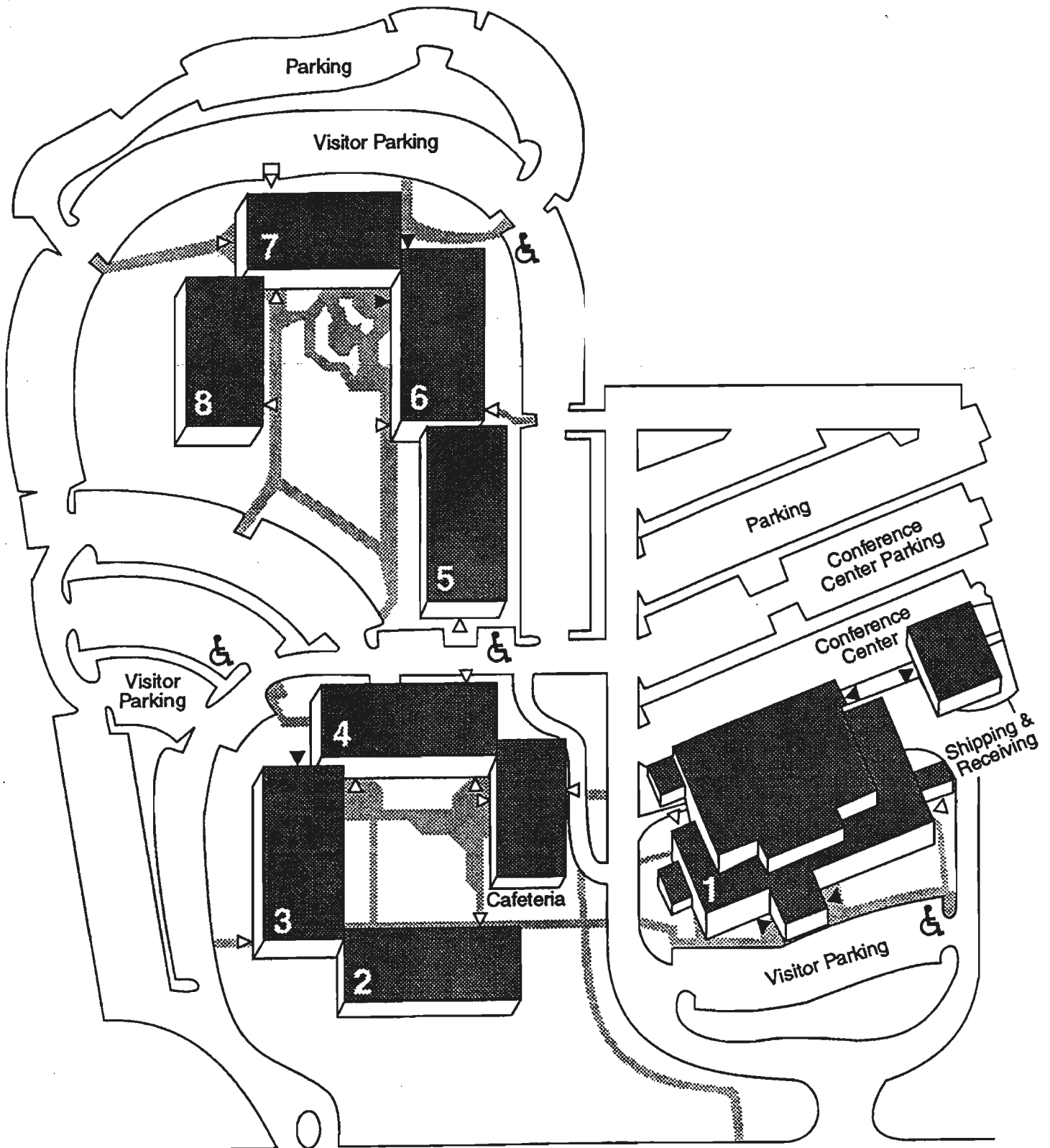
Quicken Deluxe

Quicken Financial Planner

Quickbooks

Richard Katz of Intuit will dazzle you
with the latest updates and field your
toughest questions on your favorite
Intuit products

ELECTRIC POWER RESEARCH INSTITUTE

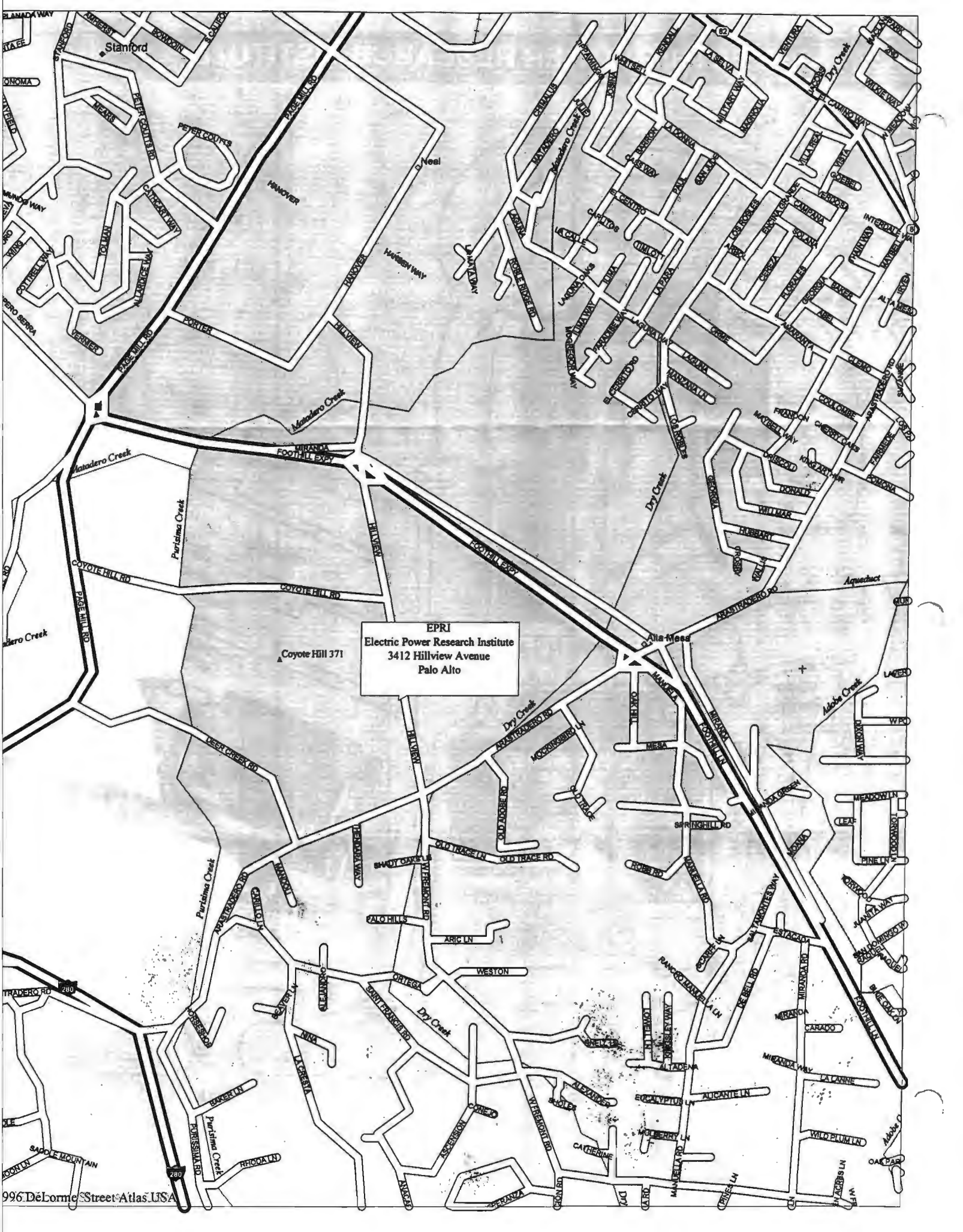


3420

Hillview Avenue

3412

- ▶ Visitor entrances
- ▷ Employee entrances



EPRI
Electric Power Research Institute
3412 Hillview Avenue
Palo Alto

Stanford

HANOVER

Coyote Hill 371

Alta Mesa